

COPYRIGHT © Hangzhou EZVIZ Software Co., Ltd. ALL RIGHTS RESERVED.

Any and all information, including, among others, wordings, pictures, graphs are the properties of Hangzhou EZVIZ Software Co., Ltd. (hereinafter referred to as “EZVIZ”). This user manual (hereinafter referred to as “the Manual”) cannot be reproduced, changed, translated, or distributed, partially or wholly, by any means, without the prior written permission of EZVIZ. Unless otherwise stipulated, EZVIZ does not make any warranties, guarantees or representations, express or implied, regarding to the Manual.


About this Manual

The Manual includes instructions for using and managing the product. Pictures, charts, images and all other information hereinafter are for description and explanation only. The information contained in the Manual is subject to change, without notice, due to firmware updates or other reasons. Please find the latest version in the EZVIZ™ website (<http://www.ezviz.com>).

Revision Record

New release – August, 2025

Trademarks Acknowledgement

EZVIZ™, ™, and other EZVIZ's trademarks and logos are the properties of EZVIZ in various jurisdictions. Other trademarks and logos mentioned below are the properties of their respective owners.

Legal Disclaimer

TO THE MAXIMUM EXTENT PERMITTED BY APPLICABLE LAW, THE PRODUCT DESCRIBED, WITH ITS HARDWARE, SOFTWARE AND FIRMWARE, IS PROVIDED “AS IS”, WITH ALL FAULTS AND ERRORS, AND EZVIZ MAKES NO WARRANTIES, EXPRESS OR IMPLIED, INCLUDING WITHOUT LIMITATION, MERCHANTABILITY, SATISFACTORY QUALITY, FITNESS FOR A PARTICULAR PURPOSE, AND NON-INFRINGEMENT OF THIRD PARTY. IN NO EVENT WILL EZVIZ, ITS DIRECTORS, OFFICERS, EMPLOYEES, OR AGENTS BE LIABLE TO YOU FOR ANY SPECIAL, CONSEQUENTIAL, INCIDENTAL, OR INDIRECT DAMAGES, INCLUDING, AMONG OTHERS, DAMAGES FOR LOSS OF BUSINESS PROFITS, BUSINESS INTERRUPTION, OR LOSS OF DATA OR DOCUMENTATION, IN CONNECTION WITH THE USE OF THIS PRODUCT, EVEN IF EZVIZ HAS BEEN ADVISED OF THE POSSIBILITY OF SUCH DAMAGES.

TO THE MAXIMUM EXTENT PERMITTED BY APPLICABLE LAW, IN NO EVENT SHALL EZVIZ'S TOTAL LIABILITY FOR ALL DAMAGES EXCEED THE ORIGINAL PURCHASE PRICE OF THE PRODUCT.

EZVIZ DOES NOT UNDERTAKE ANY LIABILITY FOR PERSONAL INJURY OR PROPERTY DAMAGE AS THE RESULT OF PRODUCT INTERRUPTION OR SERVICE TERMINATION CAUSED BY: A) IMPROPER INSTALLATION OR USAGE OTHER THAN AS REQUESTED; B) THE PROTECTION OF NATIONAL OR PUBLIC INTERESTS; C) FORCE MAJEURE; D) YOURSELF OR THE THIRD PARTY, INCLUDING WITHOUT LIMITATION, USING ANY THIRD PARTY'S PRODUCTS, SOFTWARE, APPLICATIONS, AND AMONG OTHERS.

REGARDING TO THE PRODUCT WITH INTERNET ACCESS, THE USE OF PRODUCT SHALL BE WHOLLY AT YOUR OWN RISKS. EZVIZ SHALL NOT TAKE ANY RESPONSIBILITIES FOR ABNORMAL OPERATION, PRIVACY LEAKAGE OR OTHER DAMAGES RESULTING FROM CYBER ATTACK, HACKER ATTACK, VIRUS INSPECTION, OR OTHER INTERNET SECURITY RISKS; HOWEVER, EZVIZ WILL PROVIDE TIMELY TECHNICAL SUPPORT IF REQUIRED. SURVEILLANCE LAWS AND DATA PROTECTION LAWS VARY BY JURISDICTION. PLEASE CHECK ALL RELEVANT LAWS IN YOUR JURISDICTION BEFORE USING THIS PRODUCT IN ORDER TO ENSURE THAT YOUR USE CONFORMS TO THE APPLICABLE LAW. EZVIZ SHALL NOT BE LIABLE IN THE EVENT THAT THIS PRODUCT IS USED WITH ILLEGITIMATE PURPOSES.

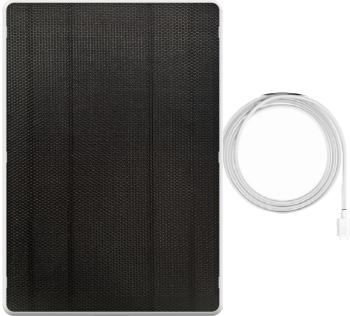
IN THE EVENT OF ANY CONFLICTS BETWEEN THE ABOVE AND THE APPLICABLE LAW, THE LATTER PREVAILS.

Table of Contents

Overview	1
1. Package Contents	1
2. Basics	2
Charging the Device.....	3
1. Power Adapter Charging	3
2. Solar Photovoltaic Charging	3
Add the Device to EZVIZ App.....	4
Installation	5
1. Installation Location.....	5
2. Install the Mounting Bracket.....	6
3. Install the Device.....	7
4. Connect with a Battery Camera.....	8

Overview

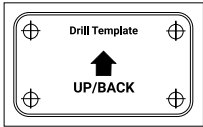
1. Package Contents



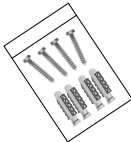
Solar Panel with Battery Storage (×1)
(hereafter refer to device)



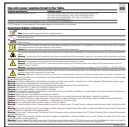
Mounting Bracket (×1)



Drilling Template (×1)



Screw Kit (×1)



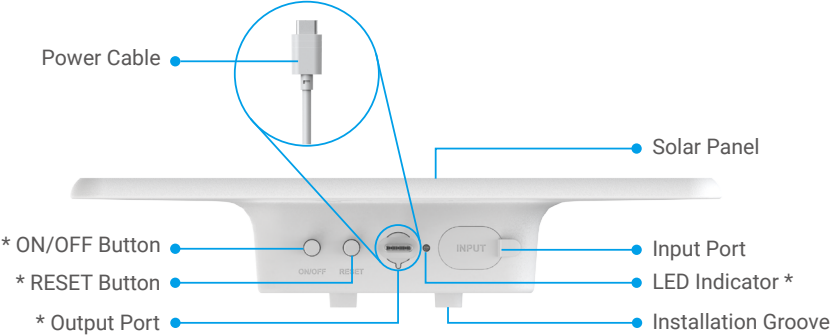
Regulatory Information (×1)



Quick Start Guide (×1)

 The device's appearance is subject to the one you have bought.

2. Basics



Name	Description
LED Indicator	<div><div></div></div> Slow-flashing Green: Charging.
	<div><div></div></div> Solid Green: Fully charged.
	<div><div></div></div> Slow-flashing Blue: Working properly.
	<div><div></div></div> Solid Blue for 5 seconds: reset successfully.
	<div><div></div></div> Solid Red: Battery low. (Remaining: 3%-10%)
ON/OFF Button	<div><div></div></div> Fast-flashing Red: Battery low. (Remaining < 3%)
	<div><div></div></div> • Power on: Press and hold the button for 2 seconds.
	<div><div></div></div> • Power off: Press and hold the button for 4 seconds.
RESET Button	<div><div></div></div> The device cannot be shutdown while charging.
RESET Button	Short press the button 3 times to set all parameters to default.
	<div><div></div></div> This operation will delete the device's historical connection and binding information. Please proceed with caution.
Output Port	Connect and supply power for EZVIZ battery cameras.

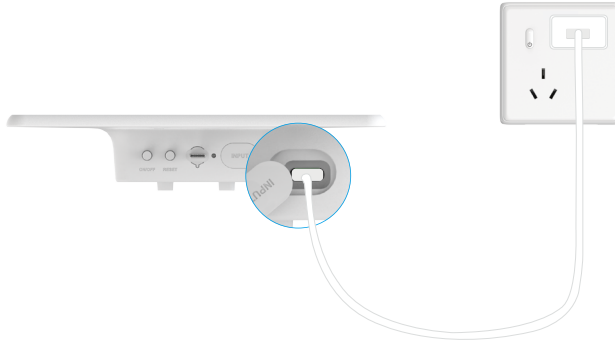
Charging the Device

This device supports two charging methods: power adapter charging and solar photovoltaic charging. For initial use, it is recommended to fully charge the device.

- Please do not charge the device when the temperature exceeds 50 °C or below -20 °C.
- The device turns on automatically during charging and cannot be powered off. To shut down, disconnect the power supply first.

1. Power Adapter Charging

Connect the device to a power outlet with a power adapter(DC5V 2A, purchase separately) and power cable for charging.



- It is not allowed to charge the device with power adapter outdoors.
- When charging, the device will be automatically turned on.
- The power outlet shall be installed near the power adapter and shall be easily accessible.

2. Solar Photovoltaic Charging

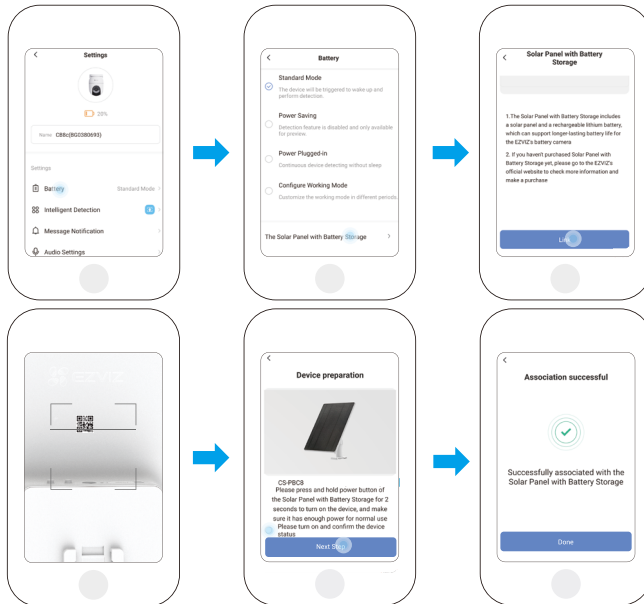
Place the device in direct sunlight to automatically convert solar energy into power. During charging, the LED indicator will flash according to the battery status.

- If the device is powered off but remains under continuous sunlight, silent charging may activate (no indicator will be displayed). To check the charging status, short press the ON/OFF Button for 2 seconds or power on the device via power adapter charging.

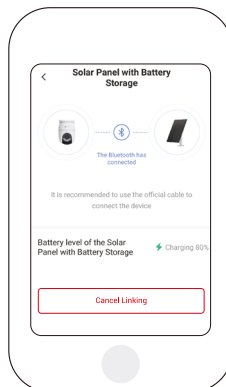
Add the Device to EZVIZ App

- This device is designed for EZVIZ battery cameras. Before adding it, please add a compatible battery camera to EZVIZ App first. For details, please refer to the user manual of the corresponding camera.
- For more information about the compatible battery cameras, please visit the EZVIZ support.ezviz.com.
- The app interface may be different due to version update, and the interface of the app you installed on your phone shall prevail.

1. Go to the preview page of the battery camera, and tap "Settings -> Battery-> The Solar Panel with Battery Storage" to the Solar Panel with Battery Storage page.
2. Tap "Link" and scan the QR code of the device.
3. Tap "Next step" to finish binding.



4. Tap "Settings -> Battery-> The Solar Panel with Battery Storage" to check battery level or cancel the device linking as needed.



Installation

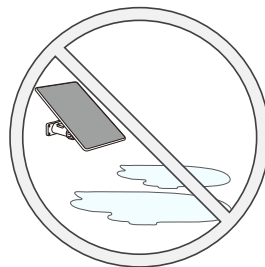
1. Installation Location

i Installation location requirements:

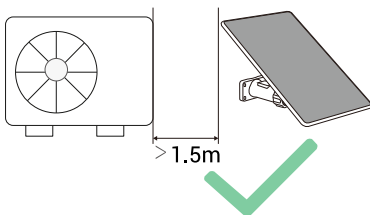
- Choose a location with unobstructed sunlight exposure throughout the day, avoiding shade from trees, building eaves, or other objects.
- Maintain a distance of no more than 3 meters (maximum length of the power cable on the device) between the device and the battery camera, ensuring the cable lies naturally without tension.
- Do not install in water-prone areas or near highly reflective surfaces (e.g., within 1 meter of glass curtain walls) to prevent water damage or light pollution interference.
- Keep at least 1.5 meters away from heat-emitting devices (e.g., AC outdoor units) to avoid impairing heat dissipation of the device.



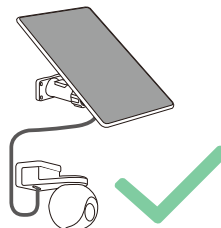
Avoid shade coverage from building eaves



Do not install in water-prone areas



Keep at least 1.5 meters away from heat-emitting devices

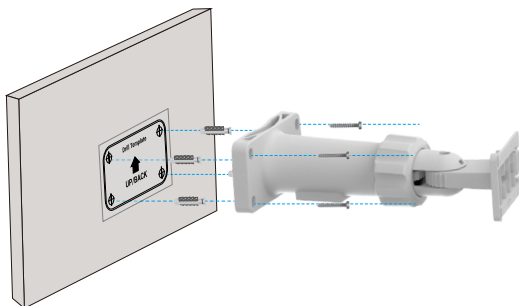


Ensuring the cable lies naturally without tension

2. Install the Mounting Bracket

Wall Mounting

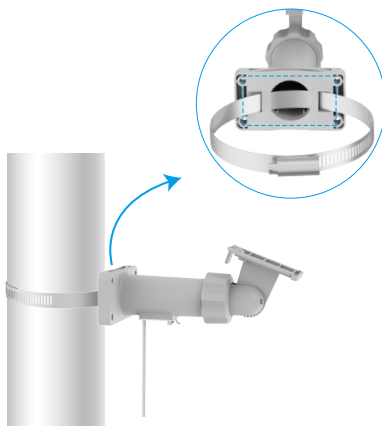
1. Stick the drilling template onto a clean and flat surface.
2. (For the cement wall/ceiling only) Choose a clean and flat wall, drill screw holes and insert anchors.
3. Use screws to fix the mounting bracket.



i When drilling holes for expansion bolts, please make sure that the diameter of the drill head is 6 mm, and that the hole depth is not less than 35 mm.

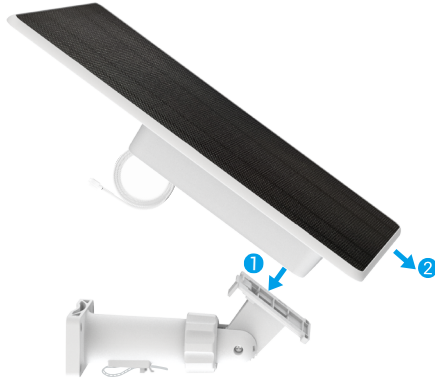
Pole Mounting

Use the hoop (Purchase separately) to fix the mounting bracket to a pole.

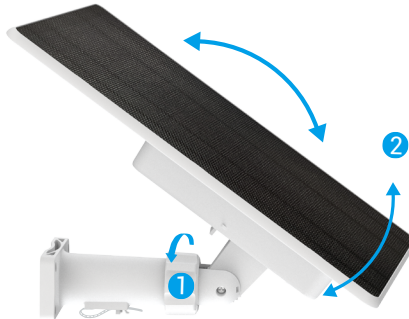


3. Install the Device

1. Align the top of the mounting bracket with the groove on the back of the device, slide it down until you hear a "click", indicating that the device is completely installed on the mounting bracket.



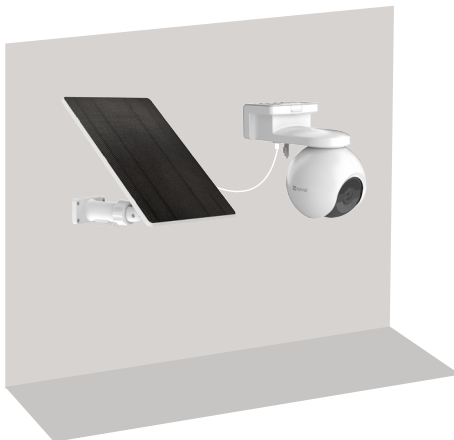
2. Loosen the gear in the direction shown in the figure, adjust the device and make sure it is facing the sun. After adjustment, please tighten the gear to prevent loosening.



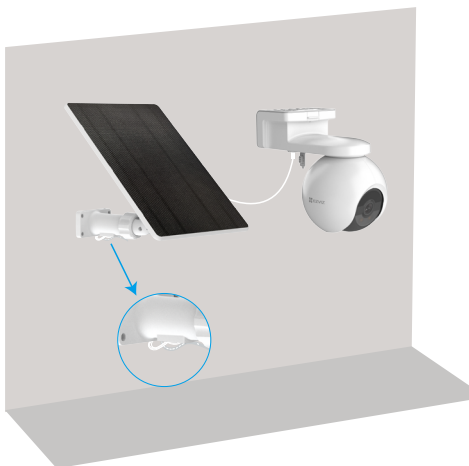
4. Connect with a Battery Camera

- 1 • **CAUTION:** As an alternative charging equipment, the power amount generated by this device may be affected by its actual surrounding environment, mainly the intensity of sunlight and the time length of illumination. If a battery camera is running out of power soon, please bear it in mind that this device alone cannot ensure the camera remains in working status.
- To protect the battery camera's battery, charging will automatically stop when the internal battery exceeds safe temperature limits (affected by ambient temperature, sunlight intensity, etc.).
- Regularly clean dust and debris from the solar panel surface to avoid reduced power generation efficiency.

1. Connect the device's output power cable to a battery camera's power port.



2. If the power cable is too long, the cable clips on the mounting bracket can be used for storage.



1 For other detailed information, please visit www.ezviz.com.